

Operating Instruction WX / WT Foot switch



Requirements:

WXD2 or WXA2 soldering station and WXR3 rework station: Firmware version 065 or higher

WTHA1 hot air station

Networkconfiguration:

WXD2 / WXA2 / WXR3 / WTHA1

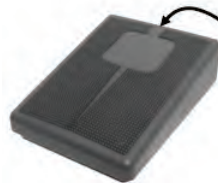
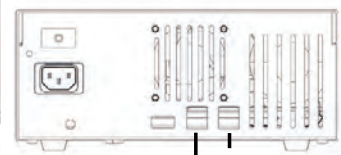
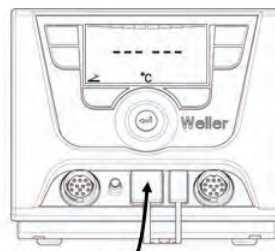


Fußschalter
Foot switch
Contact Pédale
Comando a pedale
Pedal interruptor
Interruptor de pé

On

WX solder station*

WXR 3 rework station



Replacement cable
T0058764710



Foot switch (not pushed)



Foot switch (pushed)

*(Note: WX foot switch is only connectable
to FRONT RS232 PORT)



WTHA1

The data specified above only serve to describe the product. No statements concerning a certain condition or suitability for a certain application can be derived from our information. The given information does not release the user from the obligation of own judgement and verification. It must be remembered that our products are subject to a natural process of wear and aging. © This document, as well as the data, specifications and other information set forth in it, are the exclusive property of WellerTools GmbH. Without their consent it may not be reproduced or given to third parties. Subject to modifications.

Printed in Germany. T005 57 365 00 / 09.2019

