



» ACUMESH «

WIRELESS RS485 NETWORK



# AcuMesh Wireless RS485 Network User's Manual

AN **ACCUEVERGY** SOLUTION

## **ACUMESH - WIRELESS METERING SYSTEM**

COPYRIGHT© 2015 V1.2

This manual may not be altered or reproduced in whole or in part by any means without the expressed written consent of Accuenergy.

The information contained in this document is believed to be accurate at the time of publication, however, Accuenergy assumes no responsibility for any errors which may appear here and reserves the right to make changes without notice. Please ask the local representative for latest product specifications before ordering.

## SAFETY INFORMATION

Please read this manual carefully before installation, operation and maintenance of Acuvim II series meter.

The following symbols in this manual and on Acuvim II series meters are used to provide warning of danger or risk during the installation and operation of the meters.



Electric Shock Symbol: Carries information about procedures which must be followed to reduce the risk of electric shock and danger to personal health.



Safety Alert Symbol: Carries information about circumstances which if not considered may result in injury or death.



This mark indicates that this product is UL listed.

Installation and maintenance of the AcuMesh wireless metering system should only be performed by qualified, competent professionals who have received training and should have experience with high voltage and current devices.

Accuenergy shall not be responsible or liable for any damages caused by improper meter installation and/or operation.

# Contents

<b>Chapter 1: Introduction</b> .....	<b>3</b>
1.1 ACUMESH OVERVIEW .....	4
1.2 COMMUNICATION .....	4
1.3 APPLICATIONS .....	4
1.4 HARDWARE OVERVIEW .....	5
<b>Chapter 2: Hardware Installation</b> .....	<b>6</b>
2.1 INSTALLATION CHECKLIST .....	7
2.2 STANDALONE TRANSCEIVER .....	7
2.2.1 Power .....	7
2.2.2 LEDs and Terminals .....	8
2.2.3 Configuration .....	10
2.3 AXM-MESH MODULE .....	10
2.3.1 Acuvim II Configuration .....	10
<b>Chapter 3: Advance User Settings</b> .....	<b>12</b>
3.1 ACUMESH SOFTWARE INTRODUCTION .....	13
3.2 CONFIGURATIONS .....	14
3.3 LOCATING REMOTE TRANSCEIVERS .....	19
<b>APPENDIX</b> .....	<b>21</b>
Key Specifications .....	22

*AcuMesh* Wireless RS485 Network

## Chapter 1: Introduction

---

1.1 AcuMesh Overview

1.2 Communication

1.3 Applications

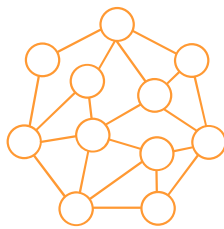
1.4 Hardware Overview

## Chapter 1 : INTRODUCTION



### 1.1 ACUMESH OVERVIEW

The AcuMesh wireless RS485 network solution is designed to connect energy meters and any devices by that communicate using RS485 wirelessly. AcuMesh is a cost-effective solution that eliminate the need for installation of communication wires. Saving premium time, labour, and reducing the challenges of retrofit applications. The Acu-Mesh transceiver is protocol neutral and can be connected to devices that communicate via Modbus and DNP3.0.



### 1.2 COMMUNICATION

The AcuMesh wireless system uses the Mesh network structure which allows each transceiver to act as an extension points in the network allowing for larger and more reliable range of communication. The AcuMesh can be used as an intermediate device between other units to improve communication when units are further apart. Using this Mesh arrangement for communication allows for point to multi-point communication. This solution enables self- healing to optimize the communication path for a more reliable communication.

### 1.3 APPLICATIONS

The AcuMesh wireless transceiver can be deployed in the following applications to expand the communication capability:

- Power and Energy Metering in Commercial buildings, Malls
- Submetering and Tenant Billing for Entire Apartment, Condominiums
- Education Facilities and Campus
- Industrial and Factory Facilities
- Renewable Energy Generation such as Solar PV, Wind and etc
- Any network with devices using RS485 communication.

1.4 HARDWARE OVERVIEW

AcuMesh is available in 3 form factors, that are functionally equivalent.



Standalone transceivers that can connect any device via RS485 and gateway



AXM-MESH transceiver module that can only be attached to the Acuvim II series meters.

*AcuMesh* Wireless RS485 Network

## Chapter 2: Hardware Installation

---

2.1 Installation Checklist

2.2 Standalone Transceiver

2.2.1 Power

2.2.2 LED's and Terminals

2.2.3 Configuration

2.3 AXM-Mesh

2.3.1 Configuration



### 2.1 INSTALLATION CHECKLIST

You'll need to confirm the following details in order to successfully complete the installation of your AcuMesh network:

- AcuMesh wireless system requires a minimum of two transceivers to form the network.
- Identify the Master device: The RS485 network master device can be a PC, PLC, data acquisition server or gateway, e.g. AcuLink 710 Data Acquisition Server.
- Identify the slave device(s): The slave devices can be our Acuvim II series power meters or any other meter or sensor with RS485 port. If it is the Acuvim II meter, the AXM-Mesh transceiver module should be used, for other devices the standalone transceiver should be used.
- Attach the provided antennas to the transceivers.

### 2.2 STANDALONE TRANSCEIVER

#### 2.2.1 Power

The transceiver can easily be powered by connected it to the USB port of a computer.

The AcuMesh transceiver can also be powered using a standard power supply of 24Vdc.

**Note:** *When the transceiver is connected to a gateway, PLC or power meter through the RS485 port then the transceiver must be powered using the external power supply.*

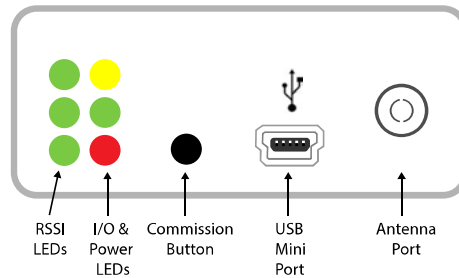


Figure 1-AcuMesh-K

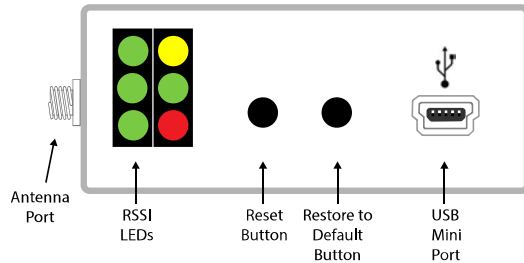


Figure 2-AcuMesh-L

### 2.2.2 LEDs and Terminals

There are two sets of LED lights on the transceiver that indicates the transceivers transmission and reception behaviour. The RSSI LED's indicate the signal strength of the incoming signal.

The Power LED's indicates the activity of the transceiver.

The yellow LED indicates the transceiver is transmitting data.

The green LED indicates the transceiver is receiving data, the red LED indicates the transceiver is powered on or it is communicating (the red light is on when powered, off briefly during RF transmission).

The LEDs are the same for both the AcuMesh-K and AcuMesh-L models

## Chapter 2: Hardware Installation

The AcuMesh-K will have the following terminals and connectors:

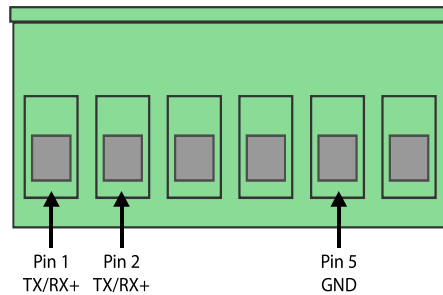


Figure 3-AcuMesh-K Terminals

PIN	RS485	Description
1	TX/RX+	Positive Transmission Line
2	TX/RX-	Negative Transmission Line
5	GND	Ground

### Power Connection

- Connection for the 7-30Vdc power adapter

### DIP Switch

- Switch 1 should always be in the 'off' position for half-duplex communication
- Switch 2 is for full-duplex communication. This switch should not be configured as most devices only support half-duplex communication

### Commission Button

- The commission button is used to reset the transceiver to its default settings when it is pushed 4 times consecutively. It can be used when the transceiver is unable to connect to the AcuMesh software. Once pushed 4 times the transceiver will contain the default settings as long as it is powered on and as long as the settings were not configured.

If a AcuMesh-L is being used then the external power supply will be needed to power the transceiver only if it is being connected by RS485. The terminals for the power supply are labelled as '+' and '-' respectively.

The AcuMesh-L has two buttons; Reset and Restore Default. The Restore Default button will restore the default settings of the transceiver when pushed 4 times consecutively.

### 2.2.3 Configuration

When connecting the AcuMesh to an Accuenergy meter or other meter or device through RS485, the meter will require its baud rate and parity to be configured to the following:

- Baud rate: 9600
- Parity: None1 (Or Parity None, stop bit 1)

If there are specific RS485 network configurations that must be met such as a different baud rate and parity then the AcuMesh will need to be configured with those configurations from the AcuMesh configuration software before they can communicate with the other devices in the network.

**NOTE:** The Acuvim II meters and any other RS485 connected devices in the network should be assigned with a unique device address from 1-247.

## 2.3 AXM-MESH MODULE

The AXM-MESH module is directly powered by the Acuvim II series meter that it is connected to.

The AXM-MESH module should be attached to the back of the Acuvim II series meter first. Other IO modules should be connected to the back of the AXM-MESH module.

### 2.3.1 Acuvim II Configuration

With the AXM-MESH module attached to the Acuvim II, the meter should be configured with the following settings to communicate:

- Protocol 2: Mesh

The procedure to configure the Acuvim II series meter to communicate with the AXM-Mesh is as followed:

Make sure you are in the 'Setting' mode. To get to this screen, press the 'H' and 'V/A' buttons simultaneously; the display selection mode will be activated and the screen should become blank. With the cursor flashing, press either the 'P' or 'E' buttons to move the cursor to 'Setting'. Press 'V/A' to enter the 'Setting' mode.

## Chapter 2: Hardware Installation

- You will be required to type in a password in the 'PASSWORD' screen. Leave the password as default '0000' and press 'V/A' to enter the parameter selection Mode.



- The cursor will be on 'SYS'. Press 'V/A' on this screen to get to the system settings. This will show screen 'S01 ADDR'.



- Press the 'E' button until you get to 'S34 PROTOCOL 2'. Select the 'Mesh' protocol.
  - Press 'V/A' to modify the setting; the cursor should now flash.
  - Press 'P' or 'E' to select 'Mesh'.
  - Press 'V/A' to confirm the change.

Note: By changing the 'Protocol 2' setting to Mesh in the meter this will automatically change the Baud rate 2 setting in the meter to 9600 and Parity 2 to None1.

If the meter does not have the Mesh option in Protocol 2, please set Baud rate 2 and Parity 2 to 9600 and None1 respectively.

To communicate with the AXM-MESH module that is attached to the Acuvim II series meter, the meter will need to be uniquely identified using the 'ADDR 2' device address configuration.

*AcuMesh* Wireless RS485 Network

## Chapter 3: Advance User Settings

---

3.1 AcuMesh Software Introduction

3.2 Configuring Transceiver

3.3 Locating remote devices

## Chapter 3: Advance User Settings

### 3.1 ACUMESH SOFTWARE INTRODUCTION

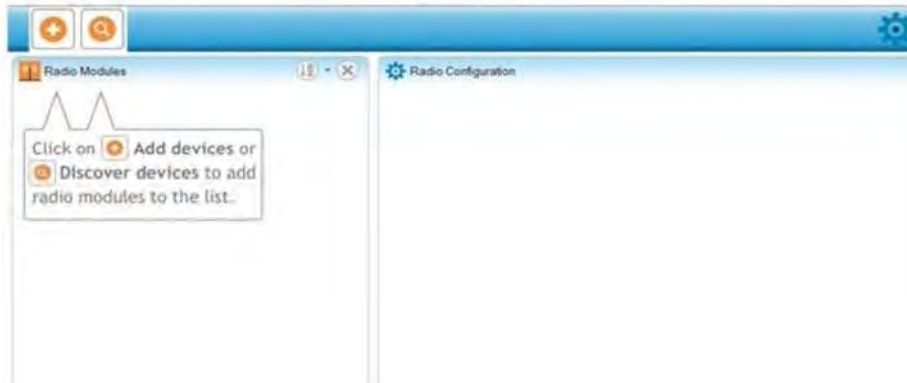
For advanced configurations such as configuring the transceivers to work in a different network, the AcuMesh configuration software needs to be used.

The transceiver must be connected to a PC using the USB cable to perform any configuration using the software.

The settings that can be configured from the software are as followed:

- Baud rate, parity of the transceiver
- Network the transceivers will communicate in
- Security of network
- Transmission of messages


Upon opening the AcuMesh software you will see the following screen:

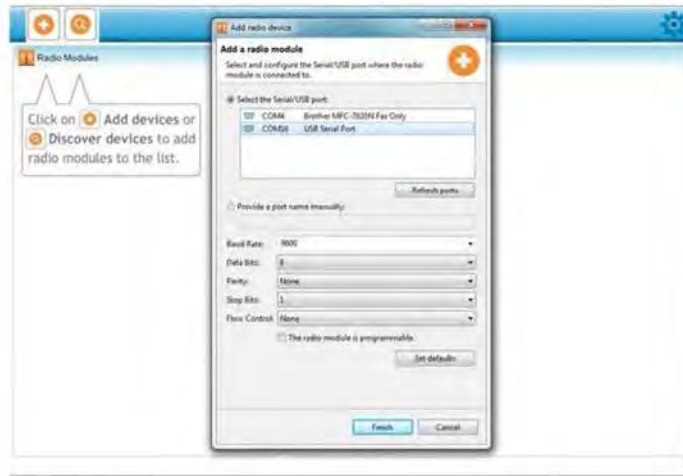


The software will be divided in two views. The left view "Radio Modules" will display all the transceivers that can be detected by the software. The right view "Radio Configuration" will display the configurations for the selected transceiver.

### 3.2 CONFIGURATIONS

To begin the software will need to locate the transceiver that is connected to the computer's USB port.

Click on the  to discover the COM port that the transceiver is connected to. Select the connect and click on 'Finish'.



Click on the discovered transceiver under the "Radio Modules" view to view and configure the settings related to this transceiver.

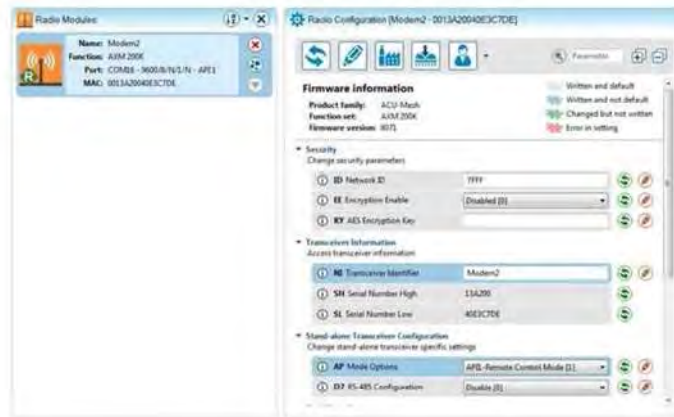






## Chapter 3: Advance user Settings

The right view of the software will display the information and settings related to the transceiver under "Radio Configuration".

**NOTE:** To configure a remote transceiver in the network, the transceiver needs to be in "remote control mode" (More information can be found below)



To read or retrieve a parameter from the transceiver press the  beside the parameter.

To write a setting to the transceiver press on the 'pencil' icon  beside the parameter if it is read and write parameter.

The configurations related to the networks security can be found below:



## AcuMesh Wireless RS485 Network

The configurations for the AcuMesh can be divided into the following sections; Security, Transceiver Information, Stand-alone Transceiver, Serial Interfacing and Advanced Settings.

To obtain more information about each configuration, you can simply press the information symbol beside each parameter.



### Security :

**ID Network ID:** The network or channel that the transceivers will communicate in. All transceivers need to be configured with the same Network ID to communicate with each other. Transceivers with different Network ID will not be able to join the wireless network. By default, all the transceivers are configured in the same network. The transceivers will be configured with the default network ID of 7FFF.

**EE Encryption Enable:** This parameter is for enabling an encryption for the transceivers in the network.

**KY AES Encryption Key:** If the EE Encryption Enable parameter is enabled then an encryption key needs to be entered. This key must be set between 0-32 characters in Hexadecimal. Every transceiver must have the Encryption Key correctly configured to join the network.

### Transceiver Information:

NI Transceiver Identifier: This parameter is for assigning the transceiver with a name so it can be easily identified in the network when searching for transceivers. By default, no identifier is assigned to the transceivers.

SH Serial Number High: A read only parameter for returning the upper 32 bits of the 64 bit unique assigned address to the transceiver.

SL Serial Number Low: A read only parameter for returning the lower 32 bits of the 64 bit unique assigned address to the transceiver.

### Stand-Alone Transceiver Configuration:

AP Mode Options: For the transceiver to communicate with other transceivers in the network this parameter must be set in 'AT-Communication Mode[0]'.  
To configure a remote transceiver, this parameter must be set to 'AP1-Remote Control Mode[1]'.

D7 RS485 Configuration: If the transceiver is connected via a RS485 port then this parameter must be set to 'RS485 Enable High[7]'.



### Serial Interfacing:

**BD Baud Rate:** The baud rate for serial communication between the serial port of the module and the host. Default setting is 9600.

**NB Parity:** Parity for the serial communication. Default is None

**SB Stop Bits:** Number of stop bits used in the serial communication. Default is one stop bit.



### Advance Settings:

The advanced settings section is for configuring settings related to how the transceivers transmit and receive messages. The settings in this section will change the performance of the transceiver therefore, it is suggested that only users with knowledge in RF communication should attempt to modify any parameters in this section.

**CE Routing Mode:** The routing mode of the transceiver. By default, this configuration is set to Router so that the transceivers will forward packets of data in a Mesh topology. A non-routing module will not forward any packets and will communicate point-to-point.

**DH Destination Address High:** The upper 32 bits of the 64 bit destination address of the transceiver to receive the packets.

**DH Destination Address Low:** The lower 32 bits of the 64 bit destination address of the transceiver to receive the packets. By default, this configuration is configured to FFFF which is the broadcast address.

**TO Transmit Options:** The transceivers transmit options.

- By default, this configuration is configured to 0XC0 for Mesh transmission
- Configure to 0x40 for point-to-point
- Configure to 0x80 for Direct-broadcast.

### 3.3 LOCATING REMOTE TRANSCEIVERS

Once a transceiver is connected to the computer using the USB cable, this transceiver can be used to locate and configure all remote transceivers that are within the network.

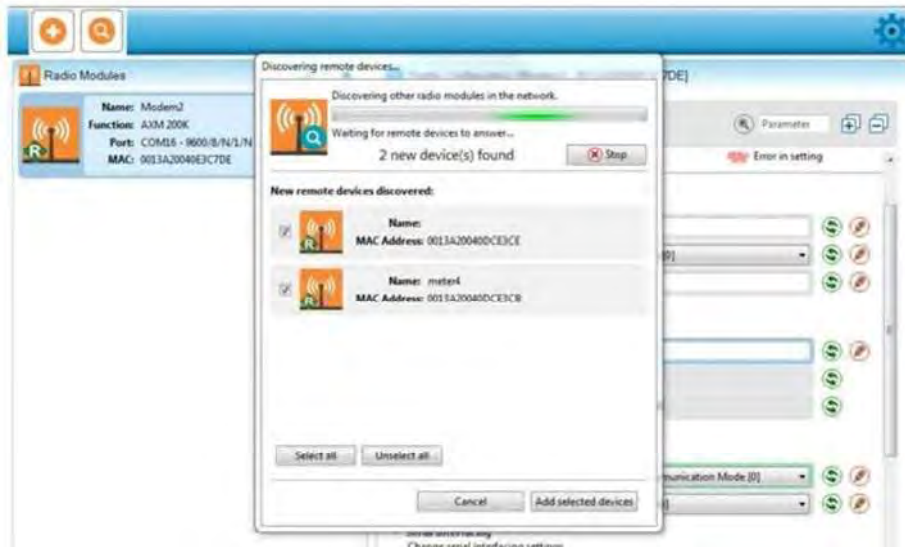
To discover the remote transceivers within the network press the "Discover radio nodes in the same network" icon that is present for the transceiver that is located under the Radio Modules view.

All the remote transceivers that are in the same network as the local transceiver that are found will appear in the "Discover remote devices" pop up box.

- Press "Add Selected Devices".

Once added, these remote transceivers will appear under the local standalone transceiver and will be denoted as remote modules.

**Note:** By default these remote modules will be identified by their MAC Address.



## AcuMesh Wireless RS485 Network

To configure the settings for the remote transceivers, select the remote module you wish to configure and its information will load under the radio configuration view.

**NOTES:** In order to configure a remote transceiver, the local transceiver will need to have its "AP Mode Options" configured to "AP1-Remote Control Mode[1]".

In order to configure a remote transceiver, the local transceiver will need to have its "AP Mode Options" configured to "AP1-Remote Control Mode[1]".



After configuring the remote transceivers, the local transceiver must have its "AP Mode Options" configured back to "AT-Communication Mode [0]" in order for the transceivers to communicate data.

## Key Specifications

Technical specifications regarding the AcuMesh can be found below. For any specification not mentioned, please contact Technical Support at Accuenergy.

	Transceiver	AXM-Mesh Module
Connection	RS485 Screw terminal, USB mini-B (power supply or configuration)	Attached to Acuvim II Power Meter
Data Rate	9600 bps	
RF Properties		
Operating Frequency Band	902 to 928 Mhz (900 Mhz ISM Band)	
Spread Spectrum	Frequency Hopping	
Number of Channels	64	
Transmit Power Output	24 dBm (250 mW)	
Receiver Sensitivity	-101 dBm	
Indoor/Urban Range	Up to 1000' (305 m)	
Outdoor RF Line-of-Sight Range	Up to 4 miles (6.5 km) with 2.1 dB dipole antennas	
RF Data Rate	Up to 200 kb/s	
Antenna		
Impedance	50 ohms unbalanced	
Networking and Security		
Supported Network Topologies	Mesh, point-to-point, point-to-multipoint, peer-to-peer	
Addressing Options	Personal Area Network Identifier (PAN ID) and 64-bit MAC add addresses	
Encryption	128 bit Encryption Standard (AES)	
Power Requirements	Power supply included	Directly powered by meter
Power Supply	100-240Vac 47-63Hz	NA
Receive Current	60 mA (@9V)	NA
Transmit Current	140 mA (@9V)	NA
Physical Properties		
Size	4.5 x 2.75 x 1.125 in. (11.4 x 7.0 x 2.9 cm)	NA
Weight	150g	NA
Operating Temperature	-40 to 85°C (Industrial)	