

NEW



Quality and reliability is our tradition

KYORITSU

DIGITAL MULTIMETERS KEW MATE 2000A/2001A/2012RA

Unique Open Jaw Technology

TRUE
RMS

Φ12

MAX
120A

New Cable rubber protection

Φ6

MAX
60A



KEW MATE 2012RA CE



KEW MATE 2000A CE

Φ10

MAX
100A



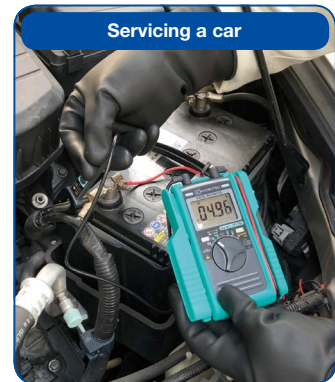
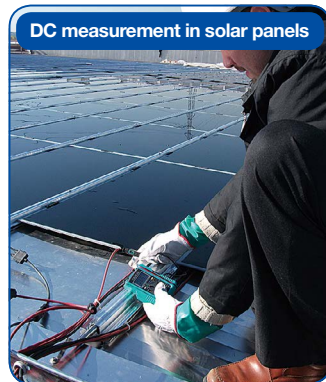
KEW MATE 2001A CE

- Increase cable strength with new rubber protection.
- Test probe can be fixed to the holster.
- Can measure AC/DC current and voltage.
- Pocket size and heavy duty design.
- With test lead cap to protect from short circuit accident.
- The open jaws are thin, perfect to clamp wires even in tight spaces.

● KEW MATE 2000A/2001A/2012RA Specifications

	2000A	2001A	2012RA
DC V	340.0mV/3.400/34.00/340.0/600V (Input impedance: 10MΩ) ±1.5%rdg±4dgt		600.0mV/6.000/60.00/600.0V (Input impedance: approx. 10MΩ) ±1.0%rdg±3dgt
AC V	3.400/34.00/340.0/600V (Input impedance: 10MΩ) ±1.5%rdg±5dgt (50 - 400Hz)		6.000/60.00/600.0V (Input impedance: approx. 10MΩ) ±1.5%rdg±5dgt (45 - 400Hz)
DC A	60.0A ±2.0%rdg±5dgt	100.0A ±2.0%rdg±5dgt	60.00/120.0A ±2.0%rdg±8dgt (60A) ±2.0%rdg±5dgt (120A)
AC A	60.0A ±2.0%rdg±5dgt (50/60Hz)	100.0A ±2.0%rdg±5dgt (50/60Hz)	60.00/120.0A ±2.0%rdg±5dgt (45 - 65Hz)
Ω	340.0Ω/3.400/34.00/340.0kΩ/3.400/34.00MΩ ±1.0%rdg±3dgt (340Ω/3.4/34/340kΩ) ±5.0%rdg±5dgt (3.4MΩ) ±15.0%rdg±5dgt (34MΩ)		600.0Ω/6.000/60.00/600.0kΩ/6.000/60.00MΩ ±1.0%rdg±5dgt (600Ω/6/60/600kΩ) ±2.0%rdg±5dgt (6MΩ) ±3.0%rdg±5dgt (60MΩ)
Continuity buzzer	Buzzer sounds below 30±10Ω		Buzzer sounds below 35±25Ω
Diode test	—	—	2.000V ±3.0%rdg±5dgt, Open-loop voltage: approx. 2.7V
Capacitance	—	—	400.0nF/4.000/40.00µF ±2.5%rdg±10dgt
Frequency	(AC A) 3.400/10.00kHz ±0.1%rdg±1dgt (AC V) 3.400/34.00/300.0kHz ±0.1%rdg±1dgt		(AC A) 99.99/400.0Hz ±0.2%rdg±2dgt (100Hz) ±0.1%rdg±1dgt (400Hz) (AC V) 99.99/999.9Hz/9.999/99.99/300.0kHz ±0.2%rdg±2dgt (100Hz) ±0.1%rdg±1dgt (1000Hz/10/100/300kHz)
Input sensitivity	Current: more than 15A Voltage: more than 30V	Current: more than 25A Voltage: more than 30V	Current: more than 6A Voltage: more than 6V [-10kHz]/more than 20V [10k - 300kHz])
Conductor size	ø6 mm max.	ø10 mm max.	ø12 mm max.
Applicable standards	IEC 61010-1 CAT III 300V, CAT II 600V Pollution degree 2, IEC 61010-2-032, IEC 61010-031, IEC 61326-1, EN 50581(RoHS)		
Power source	R03(AAA)(1.5V) × 2 * Continuous measuring time: approx. 45hours (Auto power save: approx. 10 minutes)		R03(AAA)(1.5V) × 2 * Continuous measuring time: DC V: approx. 150 hours, AC A: approx. 25 hours (Auto power save: approx. 15 minutes)
Dimensions	128(L) × 87(W) × 24(D) mm	128(L) × 92(W) × 27(D) mm	
Weight	210g approx. (including batteries)	220g approx. (including batteries)	
Accessories	R03(AAA) × 2, Instruction manual		
Optional	9107 (Carrying case [Soft])		

● Application examples



● Selection Guide

Model	2000A	2001A	2012RA
Detection method	Average value	Average value	True RMS value
Conductor size	ø6 mm	ø10 mm	ø12 mm
AC/DC A	60A	100A	120A
Diode test	-	-	✓
Capacitance	-	-	✓

! Safety Warnings : Please read the "Safety Warnings" in the instruction manual supplied with the instrument thoroughly and completely for correct use. Failure to follow the safety rules can cause fire, trouble, electrical shock, etc. Therefore, make sure to operate the instrument on a correct power supply and voltage rating marked on each instrument.

■ For inquires or orders :

Find Quality Products Online at:

www.GlobalTestSupply.com

sales@GlobalTestSupply.com