

QUICK REFERENCE GUIDE



Honeywell BW™ Icon & BW™ Icon+ Portable Multiple Gas Detector



© June 1, 2020
M05-4002-000-RevA

Introduction

The Honeywell BW™ Icon & BW™ Icon+ gas detectors warn of hazardous gas at levels above user-defined alarm setpoints.

The detector can monitor up to four gases at a time.

Refer to the Honeywell BW™ Icon User Manual for the full list of gases.

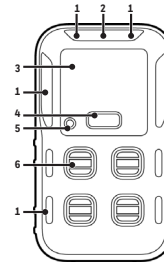
What's in the Box

- Honeywell BW™ Icon gas detector
- Battery (factory-installed)
- USB charger
- 1 Calibration cap
- Quick Reference Guide
- Tubing
- 1 Klick Fast stud

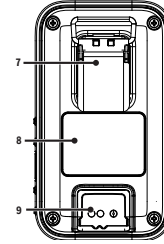
User Interface

- Alarm One** – Shows when alarm one is breached and gas highlighted next to sensor
- Alarm Two** – Shows when alarm two is breached. Alarm two will over write any alarm one status
- TWA** **Time Weighted Average** – Settable in Safety Suite DC for each toxic sensor
- STEL** **Short Term Exposure Limit** – Settable in Safety Suite DC for each toxic sensor
- Bump** – Shows when bump is due and you can configure to have a count down.
- Calibration** – Shows when bump is due and you can configure to have a count down.
- Battery status** – Shows battery status and when on charge will show charging status
- Bluetooth** – All devices have Bluetooth – double click to enter menu for search mode

Overview



- 1 LED Alarm.
- 2 IntelliFlash.
- 3 Display.
- 4 Button.
- 5 Beeper.
- 6 Sensor.



- 7 Clip.
- 8 Battery.
- 9 Charging Port.

Safety Certifications

Ex (IECEX & ATEX):
IEC60079-0, 2017
IEC60079-11, 2011-7 Edition 6.0
IEC61010-1
II 1G Ex ia I/II C T4 Ga (-40°C ≤ Tamb ≤ 60°C)

IP: IEC60529, IP66, IP68

CE (EMC): EN50270, 2015 Type 2

CE LVD: EN60950, EN61010

CE (BLE):
EN300 328
EN301 489-1
EN301 489-17
R&TTE Directive 2014/53/EU
EN62479, 2010

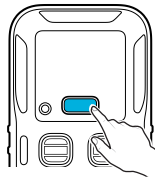
CE (ROHS): EN50581, 2012

FCC & IC:
47CFR Part 15
ANSI C63

CAUTION

- The detector is a personal safety device. It is your responsibility to respond properly to the alarm.
- For safety reasons, this equipment must be operated and serviced by qualified personnel only.
- The lithium battery in this product presents a risk of fire, explosion, and chemical burn if misused. Do not disassemble, incinerate, or heat above 212°F (100°C). Batteries exposed to heat at 266°F (130°C) for 10 minutes can cause fire and explosion. Batteries must only be charged in a safe area free of hazardous gas.
- Deactivating the detector by removing the battery pack may cause improper operation and harm the detector.
- Use only Honeywell approved battery chargers such as the vehicle Charger.
- Do not use the apparatus if it is damaged. Inspect the apparatus before use. Look for cracks and missing parts.

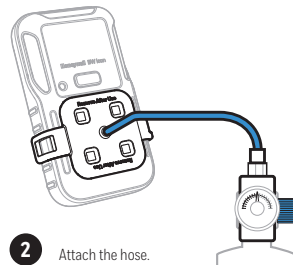
Common device's operations



Power On	4-second hold
Power Off	4-second hold
Enter and exit Menus	Double-press
Select Next	Single-press
Initiate Selected	3-second Hold
Acknowledge latched alarm	1-second hold

Bump Test and Calibration via a Mobile Device

- 1 Turn On the BW Icon. Place the cap over the detector, and then press down on both tabs to snap it into place.

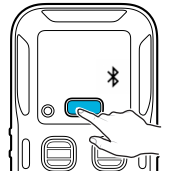


- 2 Attach the hose.

- 3 In your mobile device, open the **Device Configurator** app



- 4 In your BW Icon:
 - Double press to enter the menu
 - Single press until the BLE icon is displayed
 - Hold press 3 secs to initiate the pairing mode.



- 5 In the Device list screen from the Device Configurator app, select the BW Icon Serial Number to start pairing. The upper LED and the BLE icon will light in green after pairing succeed.

- 6 In your Mobile device:
 - Tap on the Menu button
 - Select **Remote Calibration** or **Bump**
 - Follow on-screen instructions.

- 7 The process is complete when the results are displayed on your mobile device. You can now remove the cap by pulling on the tabs.

IMPORTANT: Read the User Manual for complete information on the BW Icon operation.